

The Martin Batchelor Gallery  
& Ekstasis Editions present

# A December Book Launch

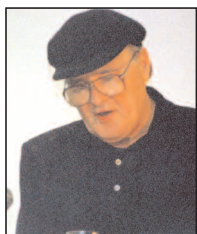
7:00 PM Friday, December 12

Martin Batchelor Gallery, 712 Cormorant Street

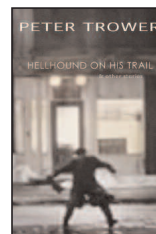
including readings by ✂ David Watmough ✂ Peter Trower  
Anne Swannell ✂ Dvora Levin ✂ Stephen Bett ✂ John Carroll  
Pam Galloway ✂ and introducing Against the Shore:  
The Best of *The Pacific Rim Review of Books*



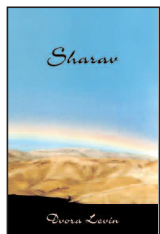
Known primarily for fiction, author David Watmough takes a turn at poetry in *Coming Down the Pike*, a volume of elegant sonnets, his 19th published book. Naturalized Canadian, **David Watmough**, 81, has been shaped and nourished by a Cornish background as well as years in London, Paris, New York and San Francisco. All his novels, short stories, plays and poems, however, have been written on Canada's west coast during the past 45 years.



A remarkable glimpse of working life along the coast in the 1950s, *Hellhound on My Trail's* stories of Sunshine Coast hamlets and their colourful characters, steep mountain 'sidehills', dangerous workplaces and rampant alcoholism paint a picture of a way of life now past. **Peter Trower** has published three novels and more than ten books of poetry to date. In 2002 he was awarded the B.C. Gas Lifetime Achievement Award for his work. He lives in Gibson's, B.C.



Movement, displacement, instability, change – these are a few of the themes artist and poet **Anne Swannell** delves into in *Shifting*, her remarkable new book of poems. She is the author of two previous books of poetry, *Mall* and *Drawing Circles on the Water*, and a children's book *The Lost Kitten of Toledo*, which she also illustrated. Equally acclaimed as both a poet and artist, she has published in numerous literary periodicals and has taken part in solo and group exhibits.



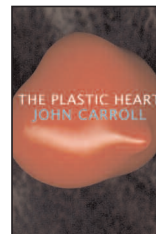
**Dvora Levin** is a vessel, thinning her clay through poetry, to reveal more light. *Sharav* is her first full-length book of poems. She has also recently published the chapbook *To Bite the Blue Apple*. A regular reader at Planet Earth Poetry in Victoria, BC, she has read poems on CBC Radio and participated in the Poet Tree Project. She leads poetry writing workshops in the workplace and for people of the street.



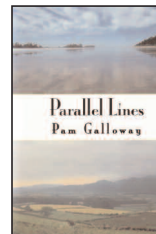
*Sass 'n Pass* takes an unsettling look at the ironies of pop culture and the angst of contemporary life. Bett's uncanny ear for spoken language tears at society's shallow facade to expose the tawdry and banal. **Stephen Bett** has had five previous books of poetry published along with a recent chapbook. He is a member of the English Department at Langara College in Vancouver.



Taut, densely lyrical and everywhere informed by a powerful and subtle music, *The Plastic Heart* is a remarkable and exciting book of poems. Born in Buffalo, NY, **John Carroll** immigrated to Canada in 1972. With degrees from Wesleyan and Western Washington Universities, as well as UBC, he has held numerous positions, and is currently chair of the English Department at The University of the Fraser Valley. *The Plastic Heart* is his second collection.



*Parallel Lines* reaches across vast distances in time and place, from 19th century industrial England to 21<sup>st</sup> century coastal BC — unfolding a memoir in poetry that explores the loss, discovery and longing that is the immigrant experience. **Pam Galloway's** poetry often explores themes of loss and belonging, and is published widely in Canadian and U.K. literary magazines and anthologies. She now lives in Vancouver, BC.



For further information: Richard Olafson or Carol Sokoloff (250) 385-3378